

Stool sample for laboratory tests F-BaktNhO and F-BaktVi3

If possible, please schedule the sampling so that you can bring the sample to a laboratory on the same day.

Take some stool on a paper dish, for example. Follow the instructions below to collect a sample into the test tube.

Sample into the tube with liquid (pink cap)



1. Open the cap of the sample tube and place the tube upright on an even surface. The tube contains liquid. Be careful not to pour the liquid out of the tube.

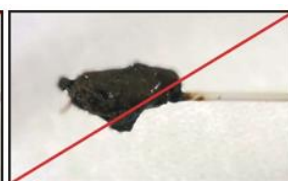
2. Stick the sampling stick in the stool and take **a small amount** of stool on the stick. A thin layer of stool is enough, avoid excess amounts.



Suitable amount



Too little stool



Too much stool

Image: Mobidiag

3. Insert the stick into the liquid inside the tube and mix well until the sample dissolves in the liquid. Break the stick off into the tube and close the cap carefully. After mixing in the stool, the liquid's colour should resemble coffee with milk.

On the labels, write:

- Your name
- Personal identity code
- Date and time

Label the tube.

Place the sample tube in a plastic bag and deliver it to the laboratory.

If you cannot bring the sample in the same day, keep it in a fridge overnight.

Contact information

If you have any questions, please call the HUSLAB service number tel. 09 471 80 900 Mon–Fri 7:30 a.m.–3:30 p.m. The service number cannot provide laboratory results.